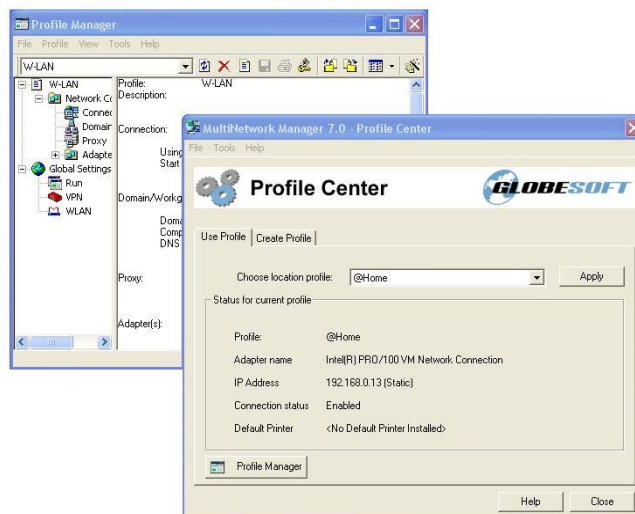


## The brilliant idea of Laptop Roaming

*The need to connect a computer to different networks is growing. We expect to be able to connect and work from wherever we are. The benefits are obvious, but the technical complexity for the end-user is increasing. We need more than just a movable laptop. We need our laptop to connect to the Internet, corporate LANs and home networks. And to do this securely we need to deal not only with connectivity barriers but also with enabling, disabling and configuring VPNs, personal firewalls, proxies, email clients etc.*

*MultiNetwork Manager provides an easy to use one-click multi-profiling UI together with wizards for the end-user. For the administrator MultiNetwork Manager will aid in providing end-users with the access and accessibility that they demand without compromising corporate policies and overloading the support organization. The comprehensive set of components in mnm provides powerful means for*

*the administrator to create, distribute and manage location and situation adapted profiles.*



## Product benefits

Laptop Roaming is achieved through managing location profiles and auto detection of network settings.

- ✓ **Connect anywhere whether it's a fixed or wireless network**  
Connect your laptop to the network at the office, your regional or local sites, at clients, at home, in hotel rooms and airport lounges with automatic or very minimal reconfiguration.
- ✓ **Multi-profile**  
With the number of location dependent software applications that are making their way onto every laptop comes a need to manage these applications differently depending on location or situation. A simple and common example is that of a personal firewall that should not be enabled while connected to the corporate LAN, but must be enabled while connected elsewhere. MNM is the powerful tool needed for administrators to create, manage and deploy custom scripts and utilities used by an organisation for different purposes.
- ✓ **Seamless access to network resources**  
While connected to each network, the user may access local network resources (such as file shares, printers, intranet, Internet and applications) seamlessly together with remote company network resources via VPN.
- ✓ **Roam between locations**  
Roam between locations by adapting the computer settings to the local network by a single click or take advantage of MNM's location sensing and let MNM automatically apply the correct profile. Focus on getting your job done instead of struggling with your configurations.
- ✓ **Common Wlan client interface**  
MNM is a complete Wlan client, and as such provides one common interface for multiple adapter vendors. As with all the other components profiles with different Wlan settings can be created and used in different locations.

*As an end-user, enjoy the freedom of Laptop Roaming without the need for technical specialists, IT-support or more than general PC user knowledge.*

*As an IT administrator, enjoy the possibility of securely providing Laptop roaming for your end users while staying in control and within budget.*

## Laptop Roaming using MultiNetwork Manager means increased efficiency and reduced cost.

- Increased productivity and saved time for people who move between work sites
- Increased IT organisation effectiveness and reduced IT support costs
- Significantly reduced dial-up costs for accessing the Internet

## Product description

The MultiNetwork Manager client is composed of four main different utilities; a Profile Manager, a Profile Wizard, a Boot Time Application (BTA) and a Profile Center.

### Profile manager:

The Profile Manager is targeted for expert users and IT administrators. It has a very powerful and flexible User Interface (UI) for creating and managing profiles. There are a set of built-in components to configure WLAN, TCP/IP, email, proxies, shares, printers etc. There are, however, also a set of components such as registry, environment and run that can be used to create customized behaviour. The Profile Manager is used to export profiles that can be pushed out or made available to end-users.

### Profile center:

The Profile Center is invoked from the system tray. It gives the user a quick summary of the current profile. It has some trouble-shooting tools that an IT department can use when talking to end users. More importantly, however, the Profile Center together with the BTA and the tray context menu is an easy to use UI that the end-user uses to select the desired profile.

### Profile wizard:

The Profile Wizard is composed of a set of four wizards that are designed to assist end-users and less savy technical users in creating new profiles. There are two wizards that discover connectivity settings, another that is used to capture changes made in Windows by somebody else and finally a wizard to import a profile created by somebody else.

### Boot Time Application

The Boot Time Application (BTA) is displayed prior to logging in. It enables the user to select a profile prior to logging on to the system. Most users prefer to display only the BTA icon and invoke the profile selector dialog when necessary.

---

## What version is right for you?

MultiNetwork Manager is available in two different versions. The Professional edition and the Enterprise edition. The Professional edition is recommended for individuals wanting to explore MNM for personal use. MNM V7 Enterprise is Globesoft's comprehensive offering, enabling controlled, cost-effective and risk-free roll-out of MNM to a group of end-users. It is designed to fully support an IT department both during deployment and operation of MNM. It enables an organization to gain maximum business benefits from the product, both in terms of cost savings and enhanced productivity. To learn more about the differences please visit our web site <http://www.globesoft.com>.

---

### Key features

- Auto detection
- One click connect
- Profile Manager
- Location sensing
- Boot time application
- Configuration Wizards
- Business user Interface
- Wizard guided profile creation
- Advanced configuration support
- Comprehensive help file
- Import/Export of configurations
- Common window for all network settings

### System requirements

- Microsoft Windows 2000/XP/XP-Tablet
- Pentium class computer
- 128 MB RAM
- 10 MB of free space on hard drive
- 10/100/1000 Ethernet NIC
- For wireless support, XP-compatible WLAN adapter is required (NDIS5.1)

### Key components

- Connection
- TCP/IP
- Proxy
- Domain/Workgroup
- Map Network Drives
- Share Drives
- Set Default Printer
- Run/Startup
- Environment
- Registry
- WLAN
- VPN launch/disable
- Firewall launch/disable
- E-mail Client
- Share User Profiles
- Push profile
- Profile lock