

Quick Guide for MultiNetwork Manager

Introducing Laptop Roaming & Multi-profiling



MultiNetwork
Manager
Version 7

Connect anywhere

Secure company policies

Multi-profiling for scripts and utilities

Seamless access to network resources

Roam between locations

Complete corporate WLAN solution

Copyright © Globesoft AB 1999

1 Quick Guide – MultiNetwork Manager

1.1 Overview

GlobeSoft is determined to provide the most comprehensive software on the market targeted to assist IT administrators and end-users in adapting the operating system and applications for different situations or locations. MultiNetwork Manager (MNM) provides an easy to use one-click multi-profiling User Interface (UI) together with wizards and auto detection for the end-user. For the administrator, MNM will aid in providing end-users with the access and accessibility that they demand without compromising corporate policies and overloading the support organization. The comprehensive set of components in MNM provides powerful means for the administrator to create, distribute and manage location and situation adapted profiles

- ❑ Auto-detect wizards that get you connected at new locations
- ❑ Wizards to capture changes made in the operating system
- ❑ Global components to help insure that corporate standards are adhered to. For example a firewall is always enabled outside of the corporate network
- ❑ Helps enforce corporate policies for laptops connected outside of the corporate network
- ❑ Boot Time Application (BTA), makes it possible to get network access prior to logging in
- ❑ Provides an easy to use common WLAN client regardless of adapter vendor
- ❑ Multi-profile UI making it easy to create, manage and deploy scripts and utilities
- ❑ Customizable interface allows Network Administrators to limit non-administrators to a selected set of connectivity policies
- ❑ Reduces the number of help desk calls
- ❑ Reduces the number of cases where a system needs to be readjusted to the corporate network
- ❑ Reduces dial-up costs by to increasing the success rate of connecting to the Internet using broadband connections
- ❑ Naming service making it possible to be able to access resources by name on a local and remote network at the same time
- ❑ Increases IT department efficiency and reduces time spent on repetitive tasks

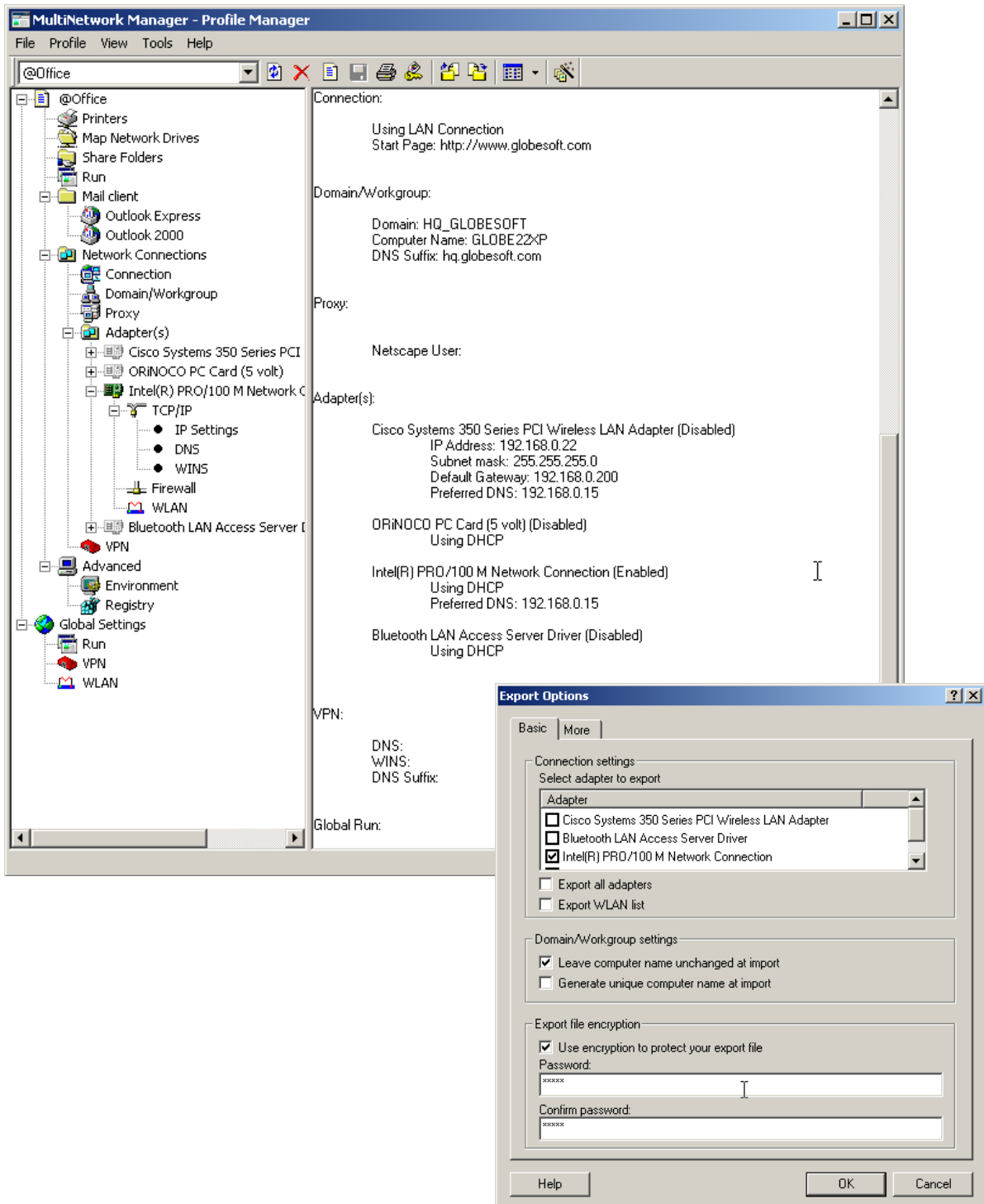
1.2 Snapshots

To give you a quick idea of what MNM looks like we have prepared the following screenshots. For more information please download a trial from <http://www.globesoft.com>.

- ❑ Profile Manager and Export
- ❑ Profile wizard and advanced discovery
- ❑ Profile center, WLAN and diagnostics

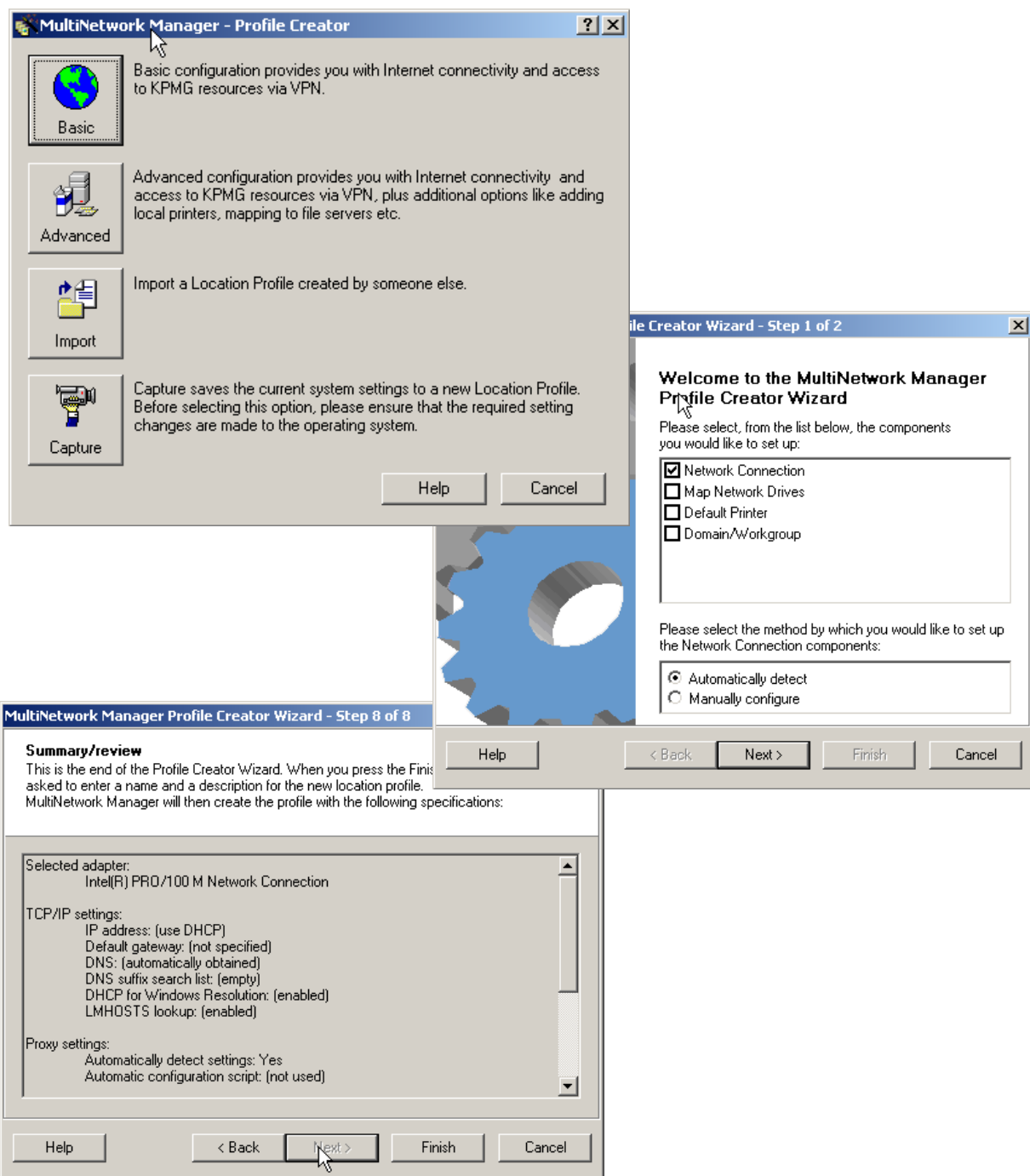
2 Profile Manager and Export

The profile manager client is targeted for IT administrators and power users. This is the tool that is used to create and export profiles. The profile manager window behavior and accessibility can be configured during install. Some organizations need to hide specific components or restrict access to chosen functionality for non-administrators. Others want to disable access to the entire client and let users invoke wizards and select profiles from the Boot Time Application (BTA) and Profile Center.



3 Profile Wizard and advanced discovery

The Profile Wizard tool can be invoked from all the other applications as well as the system tray and Boot Time Application (BTA). The Basic and Advanced wizards assist a user in getting network access at a new location. The Advanced Wizard also configures and locates selected resources such as printers and drive mappings. The Import wizard is used to create a profile prepared by somebody else. The Import file can be made available on the company intranet. The last Capture Wizard enables a user to create a snapshot of the system. This is useful if an IT administrator has configured the system outside of MNM and the users is likely to return to the same location.



4 Profile center and diagnostics

The profile center is accessible from the system tray. It provides the user with the most common way of selecting a different profile. It also provides a quick view of the current configuration status. Different organizations need the profile center to hide functionality from non-administrators. This and many other configurable options can be set in a customer specific installer. The screens below also show the WLAN scan dialog and the trouble-shooting diagnostics window. Both of which are available from the profile center.

