



MULTINETWORK MANAGER 8

**Safely access and share information
at home, at work and on the road!**

Do you need MultiNetwork Manager?

The need to connect a computer to different networks is growing. We expect to be able to connect and work from wherever we are. The benefits are obvious, but the technical complexity for the end-user is increasing. We need more than just a movable laptop. We need our laptop to connect to the Internet, corporate LANs and home networks. And to do this securely we need to deal not only with the connectivity barriers but also with enabling, disabling and configuring VPNs, personal firewalls, proxies, e-mail clients etc.

MultiNetwork Manager is a software that facilitates secure access and share of information for mobile computer users. It has an easy to use interface with guides that will make your connection quick, easy and secure no matter which access method you use (WLAN, LAN ISDN, DSL, GPRS etc.).

1 Get connected, access and share

Are you often on the move and would like to connect from wherever you are? One of the main features of MultiNetwork Manager is to provide a laptop user with instant Internet connection and access to information independent of location.

Using wizard guides you can make instant:

- Wireless connections/Wired connections
- Dial-up connections (ISDN, GPRS, UMTS/3G)
- Connection to other networks
- PC-to-PC/File sharing

2 PC-to-PC connection/File sharing

Have you ever felt that you would like to transfer information between two computers? For example, if you have purchased a new computer you may like to transfer files to it from your older computer. MultiNetwork Manager will guide you through the steps using its PC-to-PC Wizard. You may do this wireless or wired and MultiNetwork Manager will make sure it is done securely.

3 Wireless access points in range

Need to connect wirelessly quickly? MultiNetwork Manager is also a complete WLAN client supporting all brands of WLAN adapters. It will display all wireless access points available e.g. different Internet service providers or company or home WLANs in a range. You can easily access them and switch between them by clicking in a list.

4 Quickly switch between networks using location profiles

Have you ever had your computer reconfigured by an IT administrator (e.g. for a new location or situation)? You may have been at a customer site or for any other reason had your computer reconfigured by the assistance of an IT administrator. When returning to your ordinary work place or situation, the configuration changes made to your computer will cause you troubles. You may not be able to connect to the network or reach your resources. With MultiNetwork Manager you may store your configurations into profiles for later re-use. MultiNetwork Manager will let you choose or even suggest (location sensing) the appropriate profile.

5 Always stay secure

Have you ever wondered if you really are secure when connecting to a new location? MultiNetwork Manager will warn you if your firewall is not enabled or if your anti-virus program is not up to date when connecting to a new location. MultiNetwork Manager gathers all the security information you need to know at one place. A specific screen will show you the current security status of your computer. Wizard-guides will help you to enable the firewall or block the file sharing when you connect to a new network. You can also choose to save your security settings into profiles.



MultiNetwork Manager 8 is available in two different versions:

The standard edition is targeted for home and business users who need to be able to connect securely, instantly to dial-up, wired and wireless networks to share and access information without any trouble. Configuration of location profiles is only available through the wizards (whereas in the Professional edition you can also make more complex configurations in the Profile Manager). Licensing is limited to online activation only.

The professional edition is targeted directly to IT administrators/professionals but also to large groups of users who are administrated by a central IT department. It offers more functionalities and configuration possibilities compared to the Standard edition. Apart from all functionalities that are offered by the Standard edition, the Professional edition also includes a powerful interface "the Profile Manager" to tailor security, application and connectivity needs into more complex profiles. Using the Profile Manager the IT department can make sure that company security and connectivity policies are followed.

Examples Professional Edition:

Security:

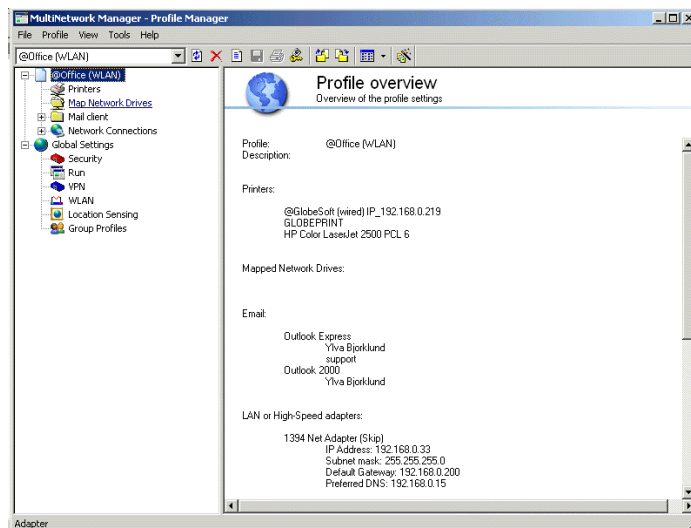
- Make it easier for users to use e.g. VPN by creating a sub profile, that is made available through the connection wizards.
- Configure other network applications to use proxy servers auto discovered by MultiNetwork Manager (e.g. NAV updates)

Access:

- Manage multiple domain and workgroup accounts
- Manage multiple e-mail accounts and settings

Administrative benefits:

- Create and update profiles centrally and push them out to remote users.
- Manage all WLAN adapters with one common client



MNM 8 Key Features

- Auto detection and one click connect
- Connection Wizards/ Sharing Wizards
- Automatically enable/disable file sharing or PFW
- Configure global and profile based security rules
- Distribute WLAN security for known connection points
- Integrate diallers such as iPass
- Location Sensing and automatic application of profiles
- Push Profiles (Professional Only)
- Import/Export profiles
- Capture settings into profiles
- Boot Time Application allowing selection of profile prior to login
- One common interface for all connectivity and security needs

System requirements (for both editions)

- Microsoft Windows 2000/XP/XP-Tablet
- Pentium class computer
- 128 MB RAM
- 10 MB of free space on hard drive
- 10/100/1000 Ethernet NIC
- For wireless support, XP-compatible WLAN adapter is required (NDIS5.1)

MNM 8 Key Components

- TCP/IP
- DUN (Dial-Up)
- Proxy
- Domain/Workgroup
- Map Network Drives
- Share drives
- Printers
- Run scripts
- Environment
- Registry
- WLAN (WEP/WPA/WPA-PSK etc.)
- VPN Control
- E-mail client
- Firewall Control
- AntiVirus Control
- Profile management and Sub-profile management

**Considering a deployment in your company?
Please contact GlobeSoft for evaluation
licenses. We are happy to assist you during
your evaluation process.
E-mail: sales@globesoft.com**