

# MULTINETWORK MANAGER 8

Quick Guide



## What is MultiNetwork Manager?

MultiNetwork Manager is a software designed to alleviate many of the technical issues encountered when roaming between different network locations. It allows laptop users to easily connect to the Internet, corporate LANS, client networks, wireless networks, access local resources (such as file servers and printers) and share information (PC-to PC) regardless of location. It has an easy to use interface with wizards that will make your connection quick and easy no matter which access method you use (WLAN, LAN, ISDN, DSL, GPRS etc.) You can create and save location specific profiles which you only need to click in a profile menu to have your computer, applications and network connection settings adapted to a specific location.

This guide will show you MultiNetwork Manager in five main areas where security and ease of connection are essential:

### 1. Troublesome connectivity made easy

Are you often on the move?  
Would you like to connect and work from wherever you are?

One of the main features of MultiNetwork Manager is to provide a laptop user with instant Internet connection and access to information independent of where you are.

Using wizard guides you can make instant:

- Wireless connections
- Wired connections
- Dial-up connections
- Connection to other networks
- PC-to-PC connection
- File Sharing

### 2. Wireless access points in range

Need to connect wirelessly quickly?

When out and about you may need to find out quickly whether there is a network access point, e.g. a hot spot, in range. The MultiNetwork Manager will display a list of all wireless access points in range, and if find one through which you have access rights or an open one you connect simply by clicking a button.



### 3. Quickly switch between networks using location/situation profiles

Are you often switching between networks that you return to?

Would you like to get instant internet access plus access to resources such as mapped drives, defaulted printers or applications to get started automatically (for example the VPN or the personal firewall)? By using MultiNetwork Manager's profile manager you may create and save profiles for different locations or situations. By a single click in a menu you may then switch between networks and have your computer, applications and network settings adapted to that specific location or situation. Move between home, office or customer site and access your resources instantly.

### 4. Always stay secure

Would you like to get a security overview at a glance?

When switching between different networks it is particularly important that you stay in control of your computer's security settings. MultiNetwork Manager will through its status screen report whether your current connection is secured by a personal firewall or not. It will inform you if your anti-virus program is up to date. Wizard-guides will help you to enable the firewall or block the file sharing when you connect to a new network.

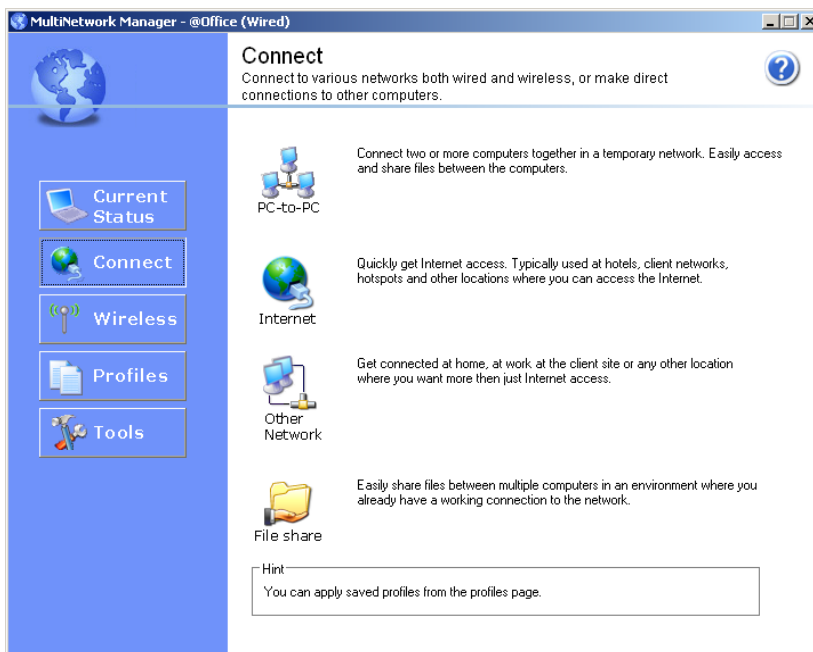
## 5. Profile Manager (Only available in the Professional Version)

The Profile Manager is a powerful interface only available in the Professional Version. It is mainly targeted to IT administrators and professionals to tailor security, application and connectivity needs into more complex profiles. Using the Profile Manager the IT department can make sure that company security and connectivity policies are followed.

### 1. Troublesome connectivity made easy

One of the main objectives with MultiNetwork Manager is to provide you as a laptop user with instant Internet connection and access to information independent of where you are. Below you will see different ways of how MultiNetwork Manager can help you to connect instantly to the Internet or to other computers using wizard guides.

- PC-to-PC connection
- Instant Internet: choose between Wired, Wireless and Dial-up connections (GPRS, ISDN, UMTS (3G))
- Connect to other networks
- File Sharing



#### PC-to-PC: connect to other computers

If you are not connected to a network but you and another user need to share files, MultiNetwork Manager's PC-to-PC wizard will help you making the file sharing possible.

**User scenario:** You and another colleague are on a trip and quickly need to exchange information before each other's sales meetings. Instead of first needing to seek internet access at a WiFi hotspot and then e-mail the information (which could be difficult if it is a large amount of data), MultiNetwork Manager can easily access the files on the other computer independent of location, for example on the hotel room, in the taxi or outside the customer.

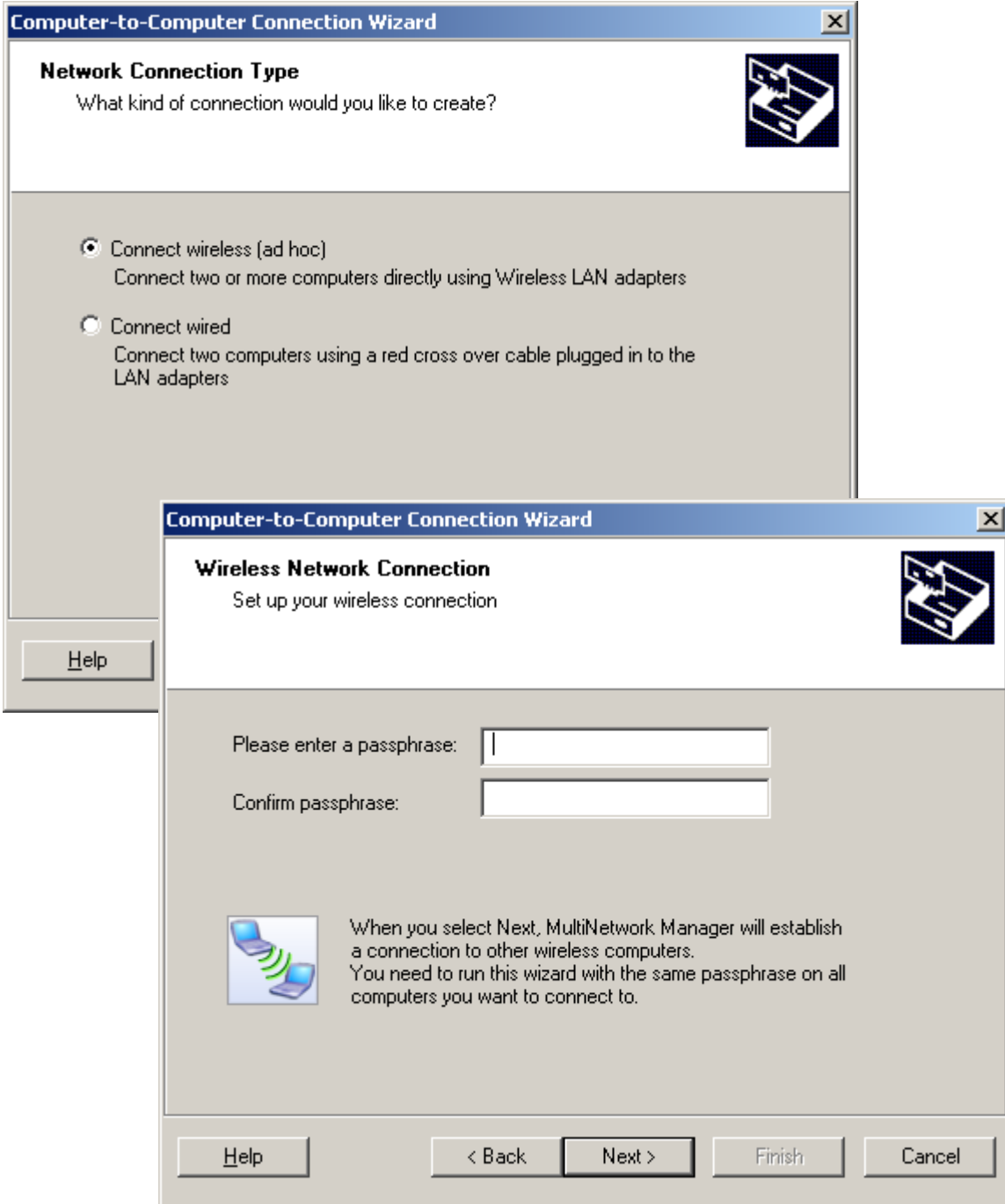
**Examples of other occasions to use the function:**

- During a conference
- In a project
- Between consultants at a customer site
- For students

**How to do it:** Independent of location (there is no need of internet connection) you and your colleague or friend can easily connect to each other's computer wirelessly or with wire. You will use a temporary password in order to allow connection from the other computer.

Just click on the "PC-to-PC icon" and then a wizard will guide you in order to help you to connect to the other PC.

**PC-to-PC: connect to other computers:**

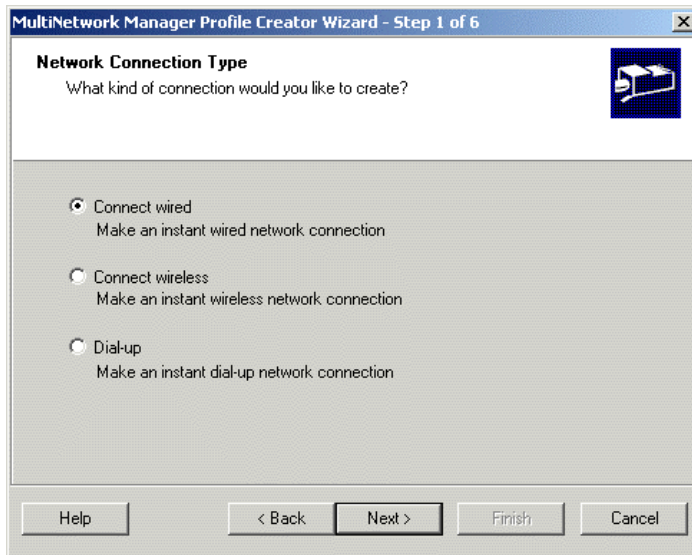


## Instant Internet: wired, wireless or dial up (GPRS, ISDN, UMTS/3G) connections

**Useful function for laptop roaming locations such as:** Different Company sites, Hotels, Airports, Customer Sites, Conference, WiFi Hotspots, University Faculties etc.

**Example of types of users:** Consultants, Sales Representatives, Managers, Engineers, Students and All Other Types of Mobile Computer Users.

**How does it work?** It is as simple as going to the “Connect” screen in MultiNetwork Manager and click on the Internet icon. A wizard will then appear asking you to choose connection type. The wizard will help you to enable the appropriate settings for your connection depending on if it is a wired connection, wireless or dial up connection.



## Connect to other networks

To get access to resources on another network than the one you usually are connected to you may through the icon “Other network” (screen “Connect”) easily reach your resources. It is the same wizard as for creating profiles except that you do not save the settings into a profile. It is therefore useful for location you believe you will not return to.

**Example:** You are at a customer site and would like to get a network connection, map network drives, set default printer, set your e-mail account and have your personal firewall disabled.

**How to do it:** When you click on the “Other Network icon” (Connect screen – see screen shot page 3). A wizard will appear. Here you select which parameters you need: “Network Connection”, “Map Network Drives”, “Default Printer”, “Outlook and Security”. MultiNetwork Manager can either detect the settings automatically or you can choose to do it manually. By clicking “next” the guide will lead you to adjust your computer to the customer site.

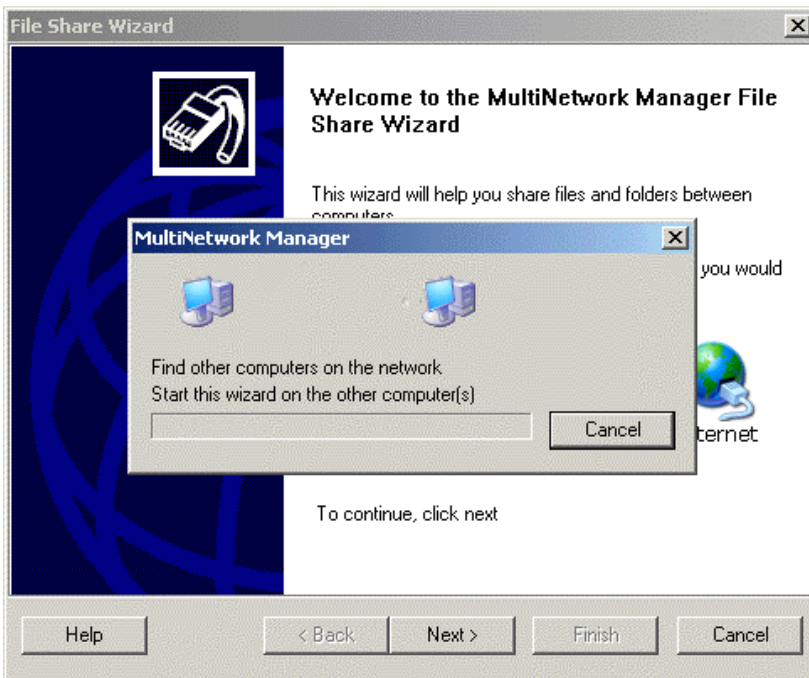
## File sharing

For file sharing you need to be connected to a network. It is very useful for small networks, for example home networks.

**User Scenario:** Imagine that you have a network with one desktop and a laptop. You have information on your desktop that you need to transfer to the laptop.

**How to do it:** The easiest way to do this would be to copy the files. In order to do this you would need to get access to the desktop from the laptop. Using MultiNetwork Manager you only need to run the “File sharing wizard” on the desktop and the laptop. A temporary password that you need to use on both computers will make the access between them possible.

**File sharing:**

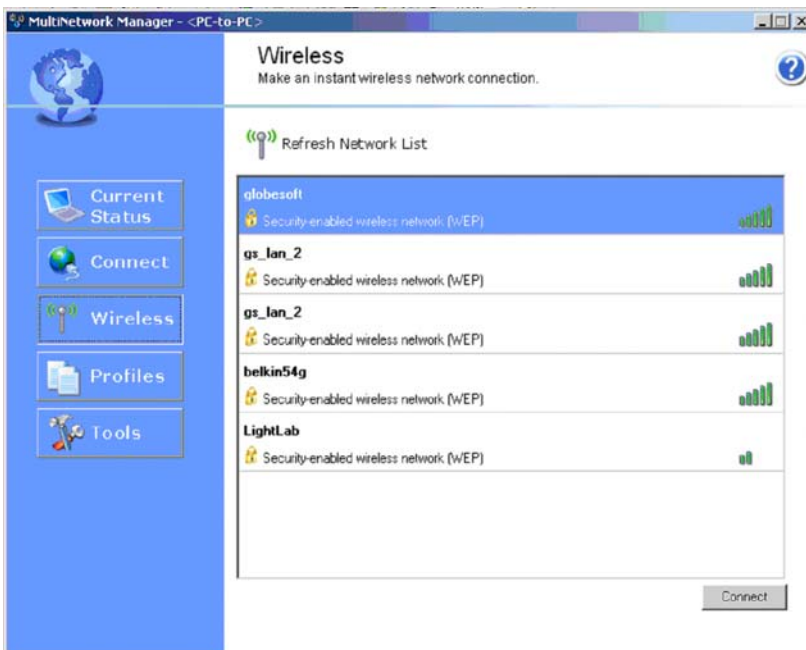


**2. Wireless access points in range**

Wherever you are, you can easily scan for wireless networks with MultiNetwork Manager. For example when arriving to a hotel, an airport, coffee shop or other hotspot, you may in the “Wireless” screen, click the “Refresh network list” button, and you can quickly check whether there are any WLANS available and then choose which one to access.

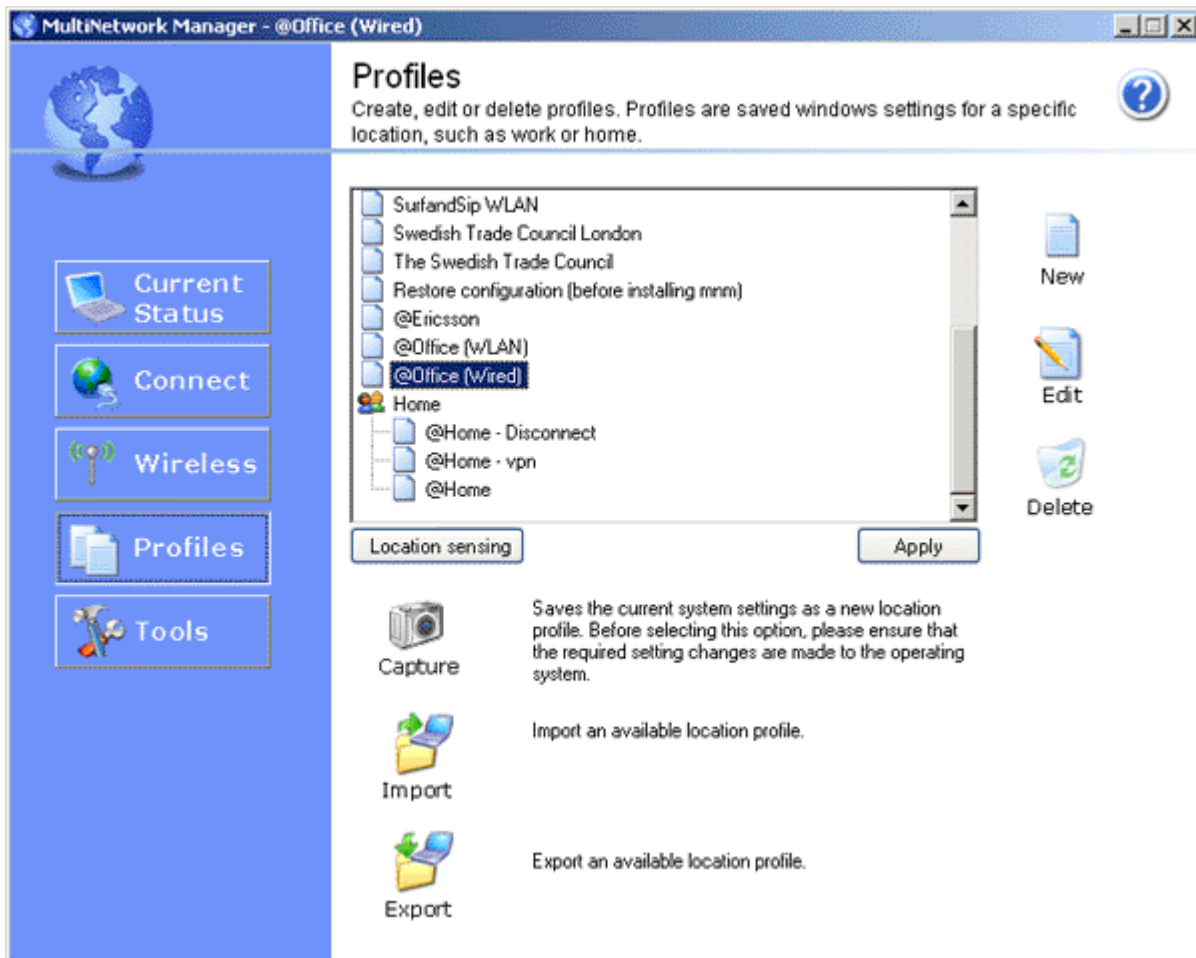
Also, for instance, being connected to a wired network, at the office, you can easily switch to a wireless network, e.g. when moving into a conference room, by simply go to the “Wireless” screen press the “Refresh network list” button and select which access point to use.

The wireless networks available will appear in a list and you can easily connect to the ones for which you have access credentials, simply by double clicking or by marking and clicking the connect button.



### 3. Quickly switch between networks using location profiles

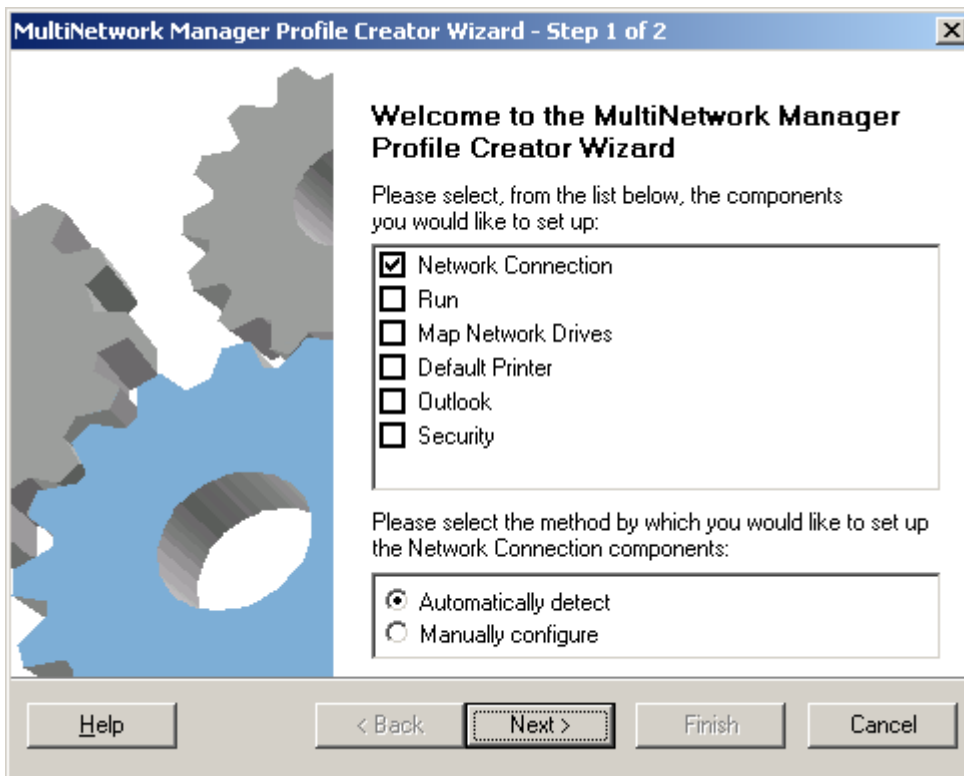
Since your computer and applications need to be adapted and reconfigured to different networks the MultiNetwork Manager Profile switching function makes roaming between known locations as easy as clicking a button. You may create and save profiles that include components such as: IP address, DHCP, network adapter, corporate proxy, domain/work group, e-mail client, defaulted printer, LAN or dial up connection, WLAN, GPRS, VPN, location sensing etc. When you arrive at a location for which you have created a profile you simply need to click on the profile name, for example “@Home” in the menu, and in a couple of seconds your settings will be adapted to that specific location. Going back to your office, you just click on the “@Office” profile and your settings will be switched back to your office settings



<b>Types of users</b>	<b>Examples of locations/situations</b>
General laptop user	Different company sites, office departments, home 1, home 2 (VPN), home wireless
The consultant/sales representativ	Company sites, office departments, customer sites, VPN profile, home
The IT administrator	Profiles for different networks
The student	Profiles for different faculties, student room, coffee shops, friend's home network

**Examples of location/situation specific profiles:**

1. Office Profile	Domain, proxy, default office printer, personal firewall disabled, VPN disabled, file sharing on	When being at your regular office space you simply need to click "capture" at the "profiles screen" in MultiNetwork Manager in order to save your current settings into an "office profile".
2. Home Profile	ADSL/dial up etc., personal firewall enabled, workgroup, file sharing disabled, default home printer, company e-mail, wireless adapters disabled (to prevent unintended network connections).	For home use the IT department can create a specific home profile for you where the firewall gets enabled automatically when applying that profile and where the corporate proxy settings are removed.
3. Home Profile (with VPN):	Same settings as above, but with VPN.	When you need to reach resources at the company intranet it is of interest to have a specific VPN profile where the VPN application is enabled automatically when applying the profile.
4. Conference Room	Domain, proxy, default project room printer, personal firewall disabled, VPN disabled, file sharing on	Use MultiNetwork Manager's wizard to create a specific profile for the conference room. See below.
5. Customer Site	Domain, TCP/IP, proxy, mapped drivers, personal firewall enabled, default printer	At the customer site you may need to have configuration for the customer's proxy to be able to get network access and other specific settings adapted to the location such as printer and mapped drivers.



## User Scenario – Business user on the move

Imagine yourself as a business user who travels extensively between the HQ office, different project locations at different client sites and home.

In the morning you arrive to the HQ office for a status meeting. While waiting for the meeting to begin, you want to check your e-mail and connect to the network by selecting the profile **"HQ Office"**. This profile was preinstalled on the laptop computer by the IT support department.

After the meeting, you drive to the client site to participate in a new project. You create a new profile immediately at startup using the wizards launched from MultiNetwork Manager. After having started up with a basic network connection, you modify the new profile by specifying printers and file servers on the local network for the project. The next time you return to the customer site, you only need to select the profile **"Customer site A"**. In the evening you return to you home and realize you forgot to do you time report. You connect your laptop to your broadband connection. At startup, you select your profile, **"Home VPN"**. MultiNetwork Manager establishes a network connection and enables the VPN client that lets you access resources at the headquarters office from home. The network drives will also be mapped to allow you to complete your tasks.

## 4. Always stay secure

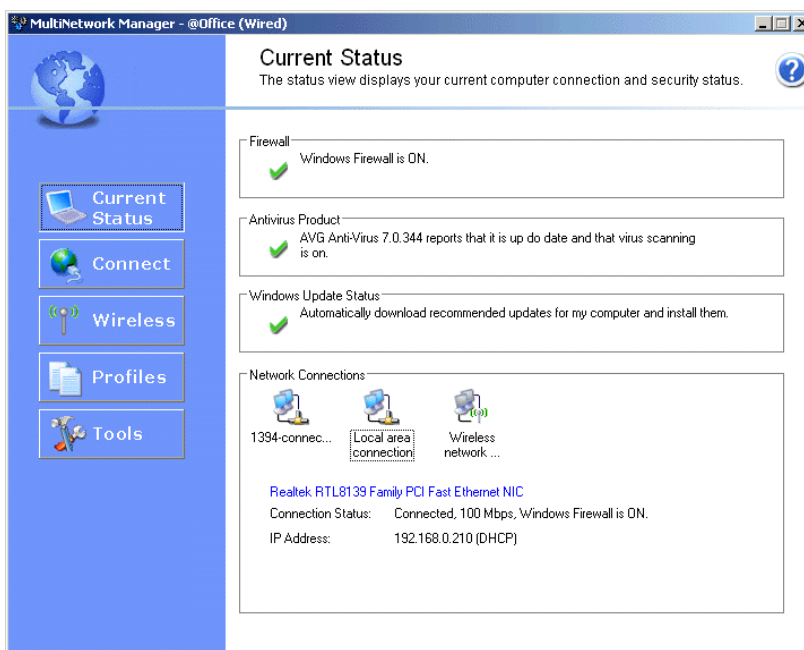
Have you ever wondered if you really are secure when connecting to a new location? MultiNetwork Manager will warn you if your firewall is not enabled or if your anti-virus program is not up to date when connecting to a new location. MultiNetwork Manager gathers all the security information you need to know at one place. A specific screen will show you the current security status of your computer. Wizard-guides will help you to enable the firewall or block the file sharing when you connect to a new network. You can also choose to save your security settings into profiles.

### Firewall

In the MultiNetwork Manager connection wizards you can choose to have the personal firewall enabled or not. If you are working within an organization/company that is protected by a corporate firewall (almost all larger companies are) there is a point to have the personal firewall disabled when working on that network. The reason for this is that the personal firewall may prevent the user from getting access to certain applications, for example the e-mail application.

It is very useful to have certain profiles where the personal firewall gets enabled automatically and a profile for the corporate network where the personal firewall is disabled.

To get information about the status you may check the "Current Status Screen" which reports whether Windows firewall is enabled or not.



## Antivirus

Do you always check that the anti-virus program has been updated and that the virus scanning is on when returning from a customer site? The “Current status screen will report this information to you and MultiNetwork Manager can also warn you if the antivirus program has not been updated when you connect to a new location.

## Window Update Status

Hackers and virus are constantly seeking ways of taking advantages of bugs in Windows, which could cause damage to your computer and applications. It is therefore very important to regularly install the new Windows updates that are released to protect your computer from attacks. In the Current Status screen you will be informed whether Windows recommended updates are set to be automatically installed or not.

## Network Connection

If you would like to check whether you have an IP address or not you can check it under “Network Connection” in the “Current Status” screen. All the adapters on your computer are also displayed here. If you would have any problem with your wireless connection for example you could check here if your wireless adapter is connected or not. If it is not connected a red cross would indicate that and if it is grey it would imply that the adapter is not enabled.

## Blocking of file sharing

MultiNetwork Manager has a wizard to assist you share files with other computers, but it also has a function that controls this possibility since it could be a security risk if used uncontrolled. In the connection wizard (and profile wizard) you may choose to “allow sharing on all adapters” or “block sharing on all adapters”. For certain situations or locations where you would like to be sure not have your file share enabled you may then create a profile where the file sharing is blocked.

## 5. Profile Manager

The profile manager is above all developed for IT administrators or advanced users. It is designed to tailor security, applications and connectivity needs into more complex profiles.

--It also provides an overview of the settings for your profiles. If you choose one of your profiles in the drop down menu you may for example see: printer name and address, the mapped network drives, network adapter information, scripts, VPN information, e-mail client, security settings , proxy etc. You may also change settings and add scripts in the “run component”. Using the Profile Manager the IT department can make sure that company security and connectivity policies are followed.

