



**PROFESSIONAL OR STANDARD
EDITION?**

MULTINETWORK MANAGER 8



Professional or Standard edition?



This document explains the differences between GlobeSoft's two main offerings of MultiNetwork Manager 8.

Standard edition

The Standard edition of MultiNetwork Manager is targeted for individuals, home and business users, who want to explore the benefits of MultiNetwork Manager for personal use.

The Standard edition contains the basic functionality required to connect securely and instantly to dial-up, wired and wireless networks as well as functionality to share and access information without any trouble. Wizards will help you to establish connection and auto-discovery functionality will find the proper settings for you. You may also choose to configure the settings manually through the wizards. MultiNetwork Manager includes a wireless network client that will show available wireless networks in a range.

Configuration of location profiles is only available through the wizards (whereas in the Professional edition you can also make more complex configurations in the Profile Manager). The Standard edition licensing module requires that each installation must be activated against the GlobeSoft web servers via Internet. The support level is only available through email and without guaranteed response time.

Professional edition

The Professional edition of MultiNetwork Manager is the edition that your company will benefit the most from in the terms of cost savings.

It is also the edition that you as an IT administrator or advanced user will benefit the most from in terms of configuration options and possibilities to adapt and manage profiles as you would like.

The Professional edition is GlobeSoft's comprehensive high-end offering, making it cost effective and safe to roll out MultiNetwork Manager to a large population of users. When deploying MultiNetwork Manager to a large group of users there are many benefits to gain. The users will be significantly more productive since an important amount of time and frustration will be saved when they can switch between networks without losing time on configurations issues. Less configuration problems means reduced helpdesk calls. Less helpdesk calls and more efficient employees implies important cost savings.

Cost savings can also be measured in terms of reduced dial up calls since there will be a dramatically increased capability for the users to connect to existing LANs (for example at customer sites) free of charge instead of dialling up using the mobile phone or the hotel phone.

Apart from all functionalities that are offered by the Standard edition, the Professional edition will also provide you with the following main features:

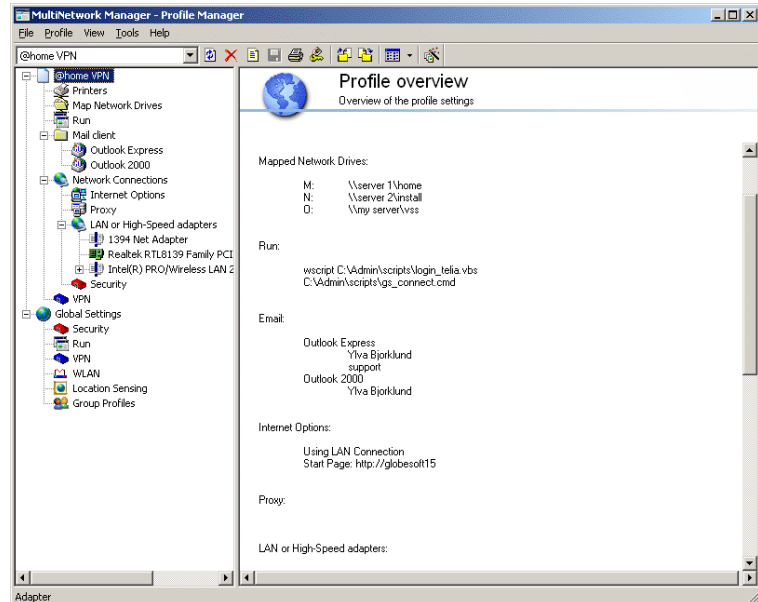
1. Profile Manager

The profile manager is a powerful tool for IT administrators and advanced users to tailor security, application and connectivity needs into more complex profiles. Using the Profile Manager the IT department can make sure that company security and connectivity policies are followed.

The Profile Manager is the main window for managing location profiles.

In order to edit the profiles in the Standard edition you need to go through a wizard whereas in the Professional edition you have a profile manager, which will give you a complete overview over all available settings for each profile.

The profile manager also provides numerous possibilities to manage and configure profiles adapted to your company's needs.



For deployment to a group of users the profile manager is normally displayed on all clients but companies can choose to hide the tool for the users or for certain users.

2. Enforcement of security policies

A very important aspect of the Profile Manager is the ability to make sure that users are following security policies also outside the corporate network. The IT-department can create and tailor global security policies that are applied at all unknown locations, e.g. enable firewall and lock down file sharing.

3. Pre-configured profiles

MultiNetwork Manager V8 Professional client software provides the possibility to create a set of pre-configured profiles during installation. Typically an organization will create an @Office profile to enable users to recover to their office settings at any time without the need for IT support. The pre-configured profiles are normally prepared with the export utility and distributed together with MultiNetwork Manager. The "Configuration options" document describes this in detail.

4. Push profile functionality

Push profile functionality allows an IT department to push out new profiles or updated profiles to remote computers and have MultiNetwork Manager to install them automatically. The push profile functionality relies on the existence of a utility to push out registry updates. It also needs access to pushed out files or a common file server that all clients can access.

5. Facilitation of licensing

If requested the licensing for larger groups of users can be significantly facilitated when using the Professional version of MultiNetwork Manager. The customer will receive an alternative license that does not require activation against GlobeSoft servers.

6. Control user rights and privileges

This unique feature in MultiNetwork Manager will allow an IT-department (Local Administrator or Domain Administrator) to grant users elevated rights for certain tasks without giving the user full administrative rights.

7. Component selection/hiding

Component selection makes it possible for an IT department to hide certain powerful components that they do not want end-users to be able to edit. However these components can however still be used by IT administrators when working with profiles. This is fairly common for the registry and environment components.

8. Professional services and customization

GlobeSoft has a dedicated team of MultiNetwork Manager professionals available to assist companies in creating customized features or plug-ins for MultiNetwork Manager Professional V8. This often involves adding completely new functionality that can be applied via the MultiNetwork Manager user-interfaces. MultiNetwork Manager V8 Professional software contains a set of plug-in API's that make it possible to extend the functionality while maintaining the look and feel of an integrated part of MultiNetwork Manager. GlobeSoft can also develop a customer specific MSI installer that can be used to install pre-configured profiles. This wrapper can also later be used to push out upgrades of MultiNetwork Manager.

9. Upgrades and support

MultiNetwork Manager is constantly being enhanced to ensure that the product complies with changes made to the Windows operating system and other third party products. The program is also constantly updated to comply with the rapid growth of new standards and products.

For the Professional Edition GlobeSoft can provide both phone and email support. The level of responsiveness and scope can be tailored individually for each customer.